

2021 EMERGENCY GUIDE



EMERGENCY PREPAREDNESS GUIDE OVERVIEW

Mississippians are all too familiar with weathering storms. Whether it be tornadoes or hurricanes, our state experiences active weather throughout most of the year. For this reason, Governor Tate Reeves, the Mississippi Emergency Management Agency and the National Weather Service urge Mississippians to prepare now for potential natural and man-made disasters.

This guide not only contains information to help prepare you and your family for a disaster, but it also has valuable tips of what to do directly following an event. Our goal is to educate the citizens of Mississippi in disaster preparedness, response and recovery to help ensure the safety of each and every Mississippian!



MESSAGE FROM GOVERNOR TATE REEVES



Over the course of her history, Mississippi has seen no shortage of natural disasters. In 2020 alone, our state experienced an active hurricane season, a historic flood, and record-breaking tornadoes. And 2021 is already proving to be an active year for natural disasters - we have already experienced severe winter weather, tornadoes, and flash flooding. As Governor, I am committed to overseeing our emergency response for any disaster that strikes Mississippi. I also urge you to protect yourself and your family and make sure you are prepared for any severe weather that comes our way. Please take advantage of this Mississippi Emergency Management Agency emergency preparedness guide and have necessary plans in place to ensure your safety and the safety of those around you. Be safe and God Bless!

Tate Reeves



MESSAGE FROM THE MISSISSIPPI EMERGENCY MANAGEMENT AGENCY

The Mississippi Emergency Management Agency's top priority is the life safety of Mississippians. Through this guide, we hope to better educate our citizens on preparing for the worst of natural disasters.

As Executive Director of MEMA, I hope this guide will prepare you for those dark and stormy days. We urge you to have a disaster supply kit and an action plan. When you're prepared, there is no need to panic. After a disaster, there could be days or even weeks without electricity. MEMA will be there for you, but first, you must help your families by having enough food and water to last you until assistance can arrive.

I'm proud to serve this great state. In 2020 we were hit with a pandemic, a record-breaking hurricane season, and a record-making tornado. Mississippians continue to show their resilience. Please use this guide to better prepare for what lies ahead.

A handwritten signature in black ink that reads "Stephen C. McLooney".



MESSAGE FROM THE NATIONAL WEATHER SERVICE



Mississippi is no stranger to receiving a plethora of weather hazards, ranging from wintry weather, flooding, tropical storms, damaging wind gusts, large hail and of course tornadoes. Mississippi has two peak severe weather seasons, with the primary severe weather peak occurring in the spring, especially during the months of March and April, and the secondary season is during the late fall/early winter, particularly during the months of November and December. In between the aforementioned severe weather seasons, is when Mississippi could experience tropical weather as Hurricane Season occurs from June 1st through November 30th. The variety of weather hazards that Mississippi can experience throughout any given year, brings about the importance of ensuring you have multiple ways of receiving severe weather information and have a safety plan in place. Being prepared is key and we at the National Weather Service in Jackson, Mississippi will always be ready to fulfill our mission to protect life and property.

TABLE OF CONTENTS

1 PLAN AND PREPARE

8 HURRICANES

14 SEVERE STORMS

19 AFTER THE STORM

27 CONTACTS

36 EVACUATION MAP

Our Goal Is To Bring Calm After The Storm



**PLAN
AND
PREPARE**

THE FIRST

72

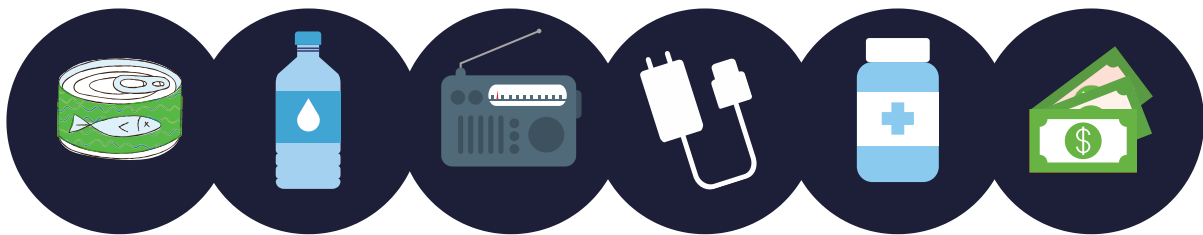
IS ON

YOU

IN A DISASTER, IT MAY BE AS LONG AS 72 HOURS BEFORE FIRST RESPONDERS ARE ABLE TO ASSIST YOU. YOU SHOULD BE PREPARED TO SURVIVE FOR A MINIMUM OF 3 DAYS WITH YOUR OWN DISASTER SUPPLY KIT

PACK A DISASTER KIT

Your kit should contain enough non-perishable food, water and supplies to last a minimum of 72 hours.



YOUR DISASTER SUPPLY KIT SHOULD ALSO INCLUDE:

- *Flashlight*
- *Personal Hygiene Items*
- *First Aid Kit*
- *Pet Food and Supplies*
- *Extra Batteries*
- *Important Documents*

ADDITIONAL REMINDER:

In the event power goes out, plan ahead and have a way to keep all necessary medication cold.



BE PREPARED & PLAN AHEAD

BUILD A DISASTER SUPPLY KIT



3 DAY SUPPLY OF NON-PERISHABLE FOOD



3 DAY SUPPLY OF BOTTLED WATER



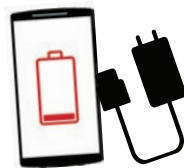
FLASHLIGHT



PORTABLE RADIO



EXTRA BATTERIES



PHONE CHARGER



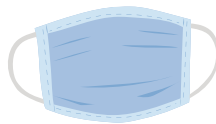
FIRST AID KIT & MEDICATION



EXTRA CASH



PET FOOD & SUPPLIES



FACE MASKS



PERSONAL HYGIENE ITEMS



IMPORTANT DOCUMENTS

DEVELOP A COMMUNICATION PLAN


- 1** ESTABLISH A WAY TO GET IN TOUCH WITH LOVED ONES
- 2** DESIGNATE AN EMERGENCY MEETING PLACE IN THE EVENT YOUR FAMILY BECOMES SEPARATED
- 3** APPOINT A FRIEND OR FAMILY MEMBER WHO IS NOT AFFECTED BY THE STORM TO BE A POINT OF CONTACT
- 4** HAVE A WAY TO RECEIVE THE LATEST WEATHER UPDATES

ARE YOU

READY?

DISASTER PLANNING FOR THOSE WITH DISABILITIES

WHAT YOU MAY NEED:

- ▶ AT LEAST A WEEK-LONG SUPPLY OF PRESCRIPTION MEDICATION
- ▶ A COMPLETE LIST OF ALL MEDICATIONS WITH DOSAGE AND ALLERGIES 
- ▶ DESCRIPTIONS OF REQUIRED ACCOMMODATIONS, MEDICAL CONDITIONS AND/OR FUNCTIONAL NEEDS
- ▶ COPIES OF MEDICAL INSURANCE AND MEDICARE CARDS
- ▶ EXTRA WHEELCHAIR BATTERIES AND/OR OXYGEN
- ▶ CONTACT INFORMATION FOR DOCTORS AND FAMILY MEMBERS WHO SHOULD BE NOTIFIED IF YOU'RE HURT
- ▶ HANDHELD ELECTRONIC DEVICES WITH HEADPHONES TO DECREASE AUDITORY DISTRACTIONS



DISASTER PLANNING FOR PETS




INCLUDE TRASH BAGS,
CLEANING PRODUCTS, A
LEASH AND PET FOOD TO
YOUR DISASTER KIT




HAVE YOUR PET WEAR A COLLAR
WITH IDENTIFICATION & RABIES TAGS

HAVE A CRATE AVAILABLE



MAKE COPIES OF
IMPORTANT DOCUMENTS
FROM YOUR
VETERINARIAN





PREPARE YOUR HOME FOR A NATURAL DISASTER

TRIM TREES



Cut back tree limbs and branches so that they don't snap off in a windstorm and land on your home or a power line

CHECK WINDOWS AND DOORS



Ensure all windows and doors are sealed properly

INSPECT YOUR ROOF



Check your roof for damaged areas that may need to be repaired or replaced

CLEAN GUTTERS



Remove debris from gutters and downspouts so that rain can flow freely off of your roof

INSURANCE

- ★ REVIEW YOUR INSURANCE POLICY TO MAKE SURE YOU HAVE ADEQUATE COVERAGE AND THAT YOU KNOW YOUR DEDUCTABLE
- ★ MAKE A *PROPERTY INVENTORY LIST* OF YOUR VALUABLES, FURNITURE, ELECTRONICS, ETC. AND TAKE PICTURES
- ★ HAVE COPIES OF IMPORTANT DOCUMENTS LIKE INSURANCE POLICIES, MORTGAGES AND TITLES IN YOUR DISASTER SUPPLY KIT
- ★ **A STANDARD HOMEOWNERS INSURANCE POLICY DOES NOT COVER FLOOD DAMAGE!**

We encourage homeowners to purchase flood insurance separately





PREPARE FOR PROLONGED POWER OUTAGES

TIPS BEFORE THE STORM



TAKE TIME TO FULLY CHARGE YOUR CELL PHONE

A portable phone charger is a great resource to have when the power goes out. If you have one, make sure it is fully charged as well.

HAVE BATTERIES AND FLASHLIGHTS ON HAND

Provide a flashlight to every member of your household



HAVE A PLAN FOR HOW YOU WILL USE MEDICAL DEVICES POWERED BY ELECTRICITY

DETERMINE AN ALTERNATE WAY TO KEEP REFRIGERATED MEDICATIONS COLD



STOCK UP ON NON-PERISHABLE FOOD AND WATER

MAKE SURE YOU HAVE CASH ON HAND



TIPS AFTER THE STORM

⚡ KEEP FREEZERS AND REFRIGERATORS CLOSED

A refrigerator can keep food cold for about 4 hours and a full freezer will keep the temperature for about 48 hours. Use coolers with ice if necessary.

⚡ ONLY USE GENERATORS OUTDOORS

⚡ DO NOT USE A GAS STOVE TO HEAT YOUR HOME

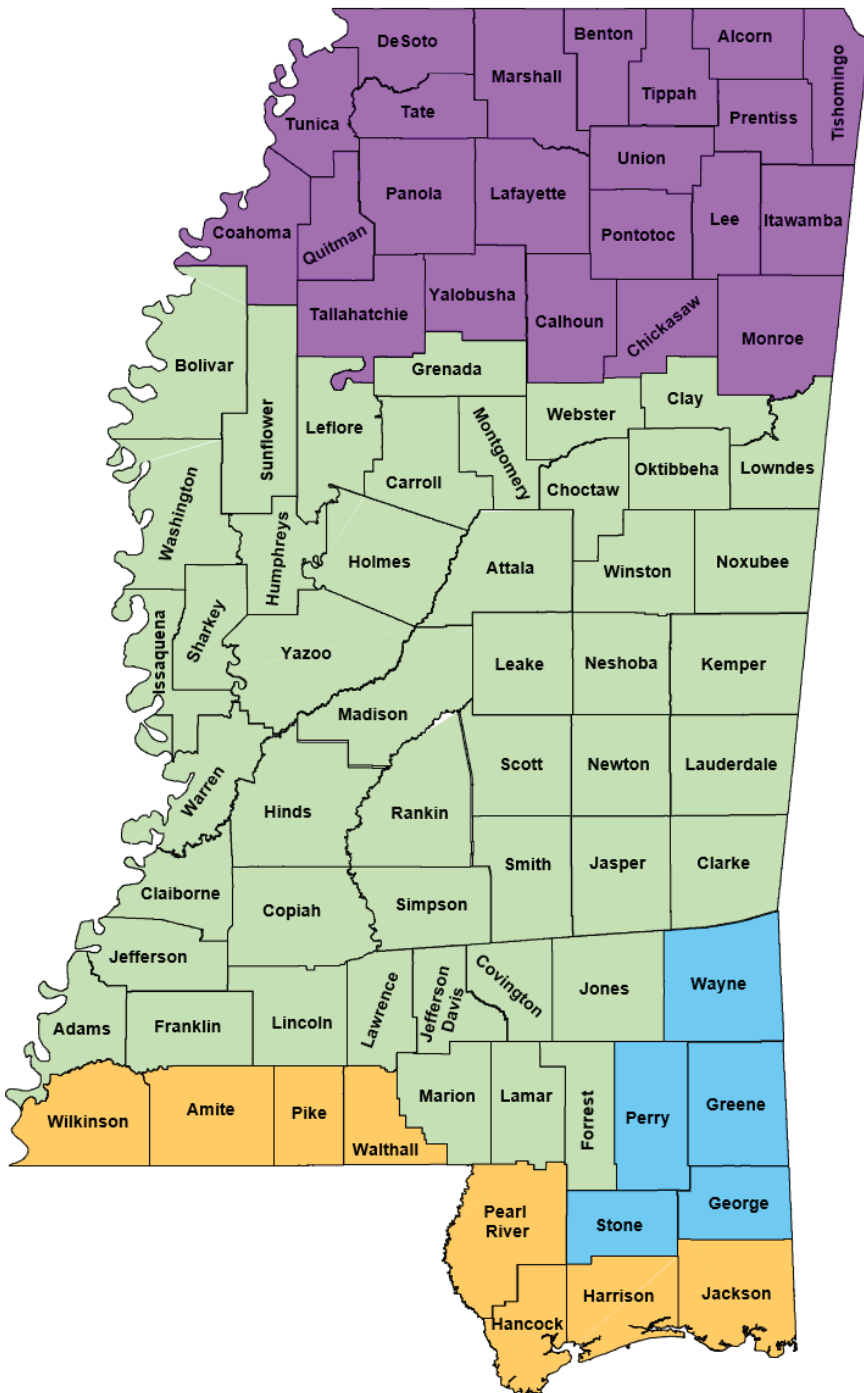
⚡ DISCONNECT ELECTRONICS TO PROTECT FROM SURGES

6 ⚡ STAY AWAY FROM FALLEN POWER LINES



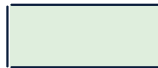
NATIONAL WEATHER SERVICE OFFICES ACROSS MISSISSIPPI

WHICH OFFICE COVERS YOUR COUNTY?



NWS MEMPHIS

@NWSMemphis
 www.weather.gov/meg



NWS JACKSON

@NWSJackson
 www.weather.gov/jan



NWS MOBILE

@NWSMobile
 www.weather.gov/mob



NWS NEW ORLEANS

@NWSNewOrleans
 www.weather.gov/lix

HAVE MULTIPLE WAYS TO RECEIVE WEATHER ALERTS!



HURRICANES

5 HURRICANE HAZARDS



WINDS from hurricanes can exceed 150 mph depending on the strength of the storm and can cause major damage to buildings and uproot trees.

STORM SURGE is water pushed ashore by the winds of a tropical cyclone. During Hurricane Katrina, the recorded storm surge in Mississippi was over 27 feet.



INLAND FLOODING is a result of heavy, persistent rain from a hurricane. It can occur far from the coast and long after landfall.

TORNADOES are commonly spawned by landfalling hurricanes. These tornadoes develop very quickly and can result in damage far away from the center.



RIP CURRENTS are strong channels of water flowing away from the shore and can develop even when a tropical system is hundreds of miles offshore.

SAFFIR-SIMPSON SCALE

BREAKDOWN



**STORM
STRENGTH**



WIND SPEED



**POWER
OUTAGES**

CATEGORY

1

74-95 MPH

Outages could last several days

CATEGORY

2

96-110 MPH

Outages could last several days to weeks

CATEGORY

3

111-129 MPH

Outages could last several days to weeks

CATEGORY

4

130-156 MPH

Outages could last weeks to months

CATEGORY

5

157+ MPH

Outages could last weeks to months

WATCHES & WARNINGS FOR TROPICAL SYSTEMS



ISSUED **48**
HOURS AHEAD
OF ANTICIPATED
ONSET

ISSUED **36**
HOURS AHEAD
OF PREDICTED
ONSET

WATCH

WARNING

STORM SURGE:

Life threatening inundation from rising water moving on shore

STORM SURGE WATCH

POSSIBILITY OF LIFE-THREATENING STORM SURGE

STORM SURGE WARNING

LIFE-THREATENING STORM SURGE IS EXPECTED

TROPICAL STORM:

A tropical cyclone with sustained winds ranging from 39-73 mph

TROPICAL STORM WATCH

TROPICAL STORM CONDITIONS ARE POSSIBLE

TROPICAL STORM WARNING

TROPICAL STORM CONDITIONS ARE EXPECTED

HURRICANE:

A tropical cyclone with sustained winds greater than 74 mph

HURRICANE WATCH

HURRICANE CONDITIONS ARE POSSIBLE

HURRICANE WARNING

HURRICANE CONDITIONS ARE EXPECTED

FOLLOW INSTRUCTIONS FROM LOCAL OFFICIALS!

ACTIONS:

- Prepare your home
- Review your evacuation plan
- Organize your disaster preparedness kit
- Stay up to date with the weather forecast

ACTIONS:

- Finish storm preparations
- Evacuate if directed by local officials
- Make sure your disaster preparedness kit is ready to go

EVACUATION TIPS

BEFORE

- KNOW WHERE YOU WILL GO WHETHER IT IS A FAMILY MEMBER'S HOUSE, A SHELTER OR A HOTEL
- REVIEW YOUR PRIMARY EVACUATION ROUTE AND HAVE A SECONDARY ROUTE PLANNED JUST IN CASE (*an evacuation map can be found on page 36*)
- MAKE ARRANGEMENTS FOR YOUR PETS
**Pets are NOT allowed in most shelters*
- SEEK INFORMATION FROM LOCAL OFFICIALS REGARDING ROAD CLOSURES AND ADDITIONAL EMERGENCY INFORMATION
- FILL UP YOUR GAS TANK AND HAVE CASH ON HAND

ON THE ROAD

- STAY ON OFFICIAL EVACUATION ROUTES
A GPS may misdirect you to roads that are closed
- TUNE TO LOCAL RADIO STATIONS FOR EMERGENCY INFORMATION UPDATES
FM Radio Stations:
 - Biloxi - 90.3
 - Bude - 88.9
 - Meridian - 88.1
 - Jackson - 91.3
 - Greenwood - 90.9
- TAKE YOUR TIME AND BE PATIENT!



2021 TROPICAL CYCLONE NAMES

ANA
BILL
CLAUDETTE
DANNY
ELSA
FRED
GRACE

HENRI
IDA
JULIAN
KATE
LARRY
MINDY
NICHOLAS

ODETTE
PETER
ROSE
SAM
TERESA
VICTOR
WANDA

2022 TROPICAL CYCLONE NAMES

ALEX
BONNIE
COLIN
DANIELLE
EARL
FIONA
GASTON

HERMINE
IAN
JULIA
KARL
LISA
MARTIN
NICOLE

OWEN
PAULA
RICHARD
SHARY
TOBIAS
VIRGINIE
WALTER





SEVERE STORMS

5 SEVERE STORM HAZARDS



A **TORNADO** is a violent rotating column of air that can have wind speeds over 200 mph. Tornadoes can destroy buildings, flip cars, and create deadly flying debris.

LIGHTNING is a giant spark of electricity that occurs in all thunderstorms. On average, the United States experiences about 25 million lightning strikes a year.



HAIL is a type of precipitation consisting of solid ice that forms inside severe thunderstorms. Hailstones can be as small as a pea or as large as a grapefruit.

FLASH FLOODING is caused by heavy or excessive rainfall in a short period of time. Six inches of fast-moving water can knock a person off his or her feet.



DAMAGING WINDS that are not associated with rotation are called 'straight-line' winds and can exceed 100 mph. Straight-line winds can be just as destructive as tornadoes.

SEVERE THUNDERSTORM — RISK CATEGORIES —

STAYING AHEAD OF THE STORMS

SEVERE RISK CATEGORIES	DEFINITION OF RISK	POSSIBLE HAZARDS
LEVEL 1 'MARGINAL' RISK	<u>ISOLATED</u> SEVERE THUNDERSTORMS ARE POSSIBLE	<ul style="list-style-type: none"> • Winds 40-60 mph • Hail up to 1" • Low tornado risk <i>Limited in duration</i>
LEVEL 2 'SLIGHT' RISK	<u>SCATTERED</u> SEVERE THUNDERSTORMS ARE POSSIBLE	<ul style="list-style-type: none"> • One or two tornadoes • Reports of strong winds • Hail ~ 1", isolated 2" <i>Short-lived storms</i>
LEVEL 3 'ENHANCED' RISK	<u>NUMEROUS</u> SEVERE THUNDERSTORMS ARE POSSIBLE	<ul style="list-style-type: none"> • A few tornadoes • Several reports of wind damage • Damaging hail 1-2"
LEVEL 4 'MODERATE' RISK	<u>WIDESPREAD</u> SEVERE THUNDERSTORMS ARE LIKELY	<ul style="list-style-type: none"> • Strong tornadoes • Widespread wind damage • Destructive hail 2"+
LEVEL 5 'HIGH' RISK	<u>WIDESPREAD</u> SEVERE THUNDERSTORMS ARE EXPECTED	<ul style="list-style-type: none"> • Tornado outbreak • Extreme wind damage • Destructive hail 2"+ <i>Long-lived & very intense</i>

Days ahead of a severe weather event, meteorologists will share convective outlook graphics. This graphic displays up to five different colors representing risk levels of an upcoming severe weather event.

WATCHES & WARNINGS FOR SEVERE WEATHER



ISSUED **HOURS**
AHEAD OF
POSSIBLE
STORMS

ISSUED **MINUTES**
AHEAD OF
IMMINENT
STORMS

WATCH

WARNING

SEVERE THUNDERSTORM:

Capable of producing winds of at least 58 mph, 1 inch hail or greater and a tornado

SEVERE THUNDERSTORM WATCH

CONDITIONS ARE FAVORABLE FOR SEVERE STORMS TO DEVELOP

SEVERE THUNDERSTORM WARNING

A SEVERE STORM HAS FORMED AND IS IMMINENT

TORNADO:

A violent, rotating column of air with winds ranging from 65 to over 200 mph

TORNADO WATCH

CONDITIONS ARE FAVORABLE FOR TORNADOES TO DEVELOP

TORNADO WARNING

A TORNADO HAS FORMED AND IS IMMINENT

FLASH FLOOD:

Caused by heavy or excessive rainfall in a short period of time

FLASH FLOOD WATCH

CONDITIONS ARE FAVORABLE FOR FLASH FLOODING TO OCCUR

FLASH FLOOD WARNING

DANGEROUS FLASH FLOODING IS OCCURRING

HAVE MULTIPLE WAYS TO RECEIVE WARNINGS!



ACTIONS:

- Remain alert
- Review your severe weather plan
- Monitor weather conditions

ACTIONS:

- Take action immediately!
- Seek shelter in an interior room of a sturdy structure away from windows

HAVE MULTIPLE WAYS TO RECEIVE WARNINGS



NOAA WEATHER RADIO



LOCAL TV & RADIO



OUTDOOR SIRENS



WIRELESS EMERGENCY ALERTS



WEATHER APPS



SOCIAL MEDIA

WHERE TO GO DURING A TORNADO WARNING



SEEK SHELTER INSIDE IMMEDIATELY IN A BASEMENT OR STORM SHELTER



IF YOU DON'T HAVE A BASEMENT OR STORM SHELTER, MOVE TO AN INTERIOR ROOM OF A STURDY STRUCTURE ON THE LOWEST LEVEL WITH NO WINDOWS TO THE OUTSIDE



EXTERIOR ROOMS WITH WINDOWS OR DOORS TO THE OUTSIDE ARE NOT SAFE



ROOMS ON THE TOP OR SECOND FLOOR ARE NOT SAFE

DO NOT LEAVE YOUR SAFE PLACE UNTIL THE TORNADO WARNING HAS EXPIRED FOR YOUR AREA!

AFTER THE STORM



WHAT TO DO AFTER THE STORM

KEY SAFETY TIPS AFTER THE STORM

- ▶ STAY OFF THE ROADS UNLESS TRAVEL IS ABSOLUTELY NECESSARY
- ▶ IF YOU COME ACROSS FALLEN POWER LINES, STAY BACK AT LEAST 500 FEET AND DO NOT TOUCH THE LINES
- ▶ WHEN USING A GENERATOR, KEEP IT OUTSIDE. NEVER RUN A GENERATOR IN THE HOUSE OR GARAGE
- ▶ STAY OUT OF DAMAGED BUILDINGS AND WAIT TO RE-ENTER UNTIL IT'S DEEMED SAFE



WHO TO CALL:

- FOR LIFE-THREATENING SITUATIONS, CALL 911
- CALL YOUR LOCAL EMERGENCY MANAGEMENT AGENCY FOR RESOURCES OR HELP WITH SHELTER NEEDS
Phone numbers can be found on page 29
- THOSE WITH DISABILITIES CAN CALL 'LIFE OF MS' AT 601-969-4009 OR 1-800-748-9398 (V/TDD) FOR HELP

HELP



WHAT TO DO IF YOUR HOME IS DAMAGED

- ✓ TAKE PICTURES OF THE DAMAGE TO YOUR HOUSE AND ITS CONTENTS FOR INSURANCE PURPOSES
- ✓ CALL YOUR INSURANCE AGENT TO BEGIN THE PROCESS OF FILING A CLAIM
- ✓ REPORT THE DAMAGE TO LOCAL OFFICIALS:

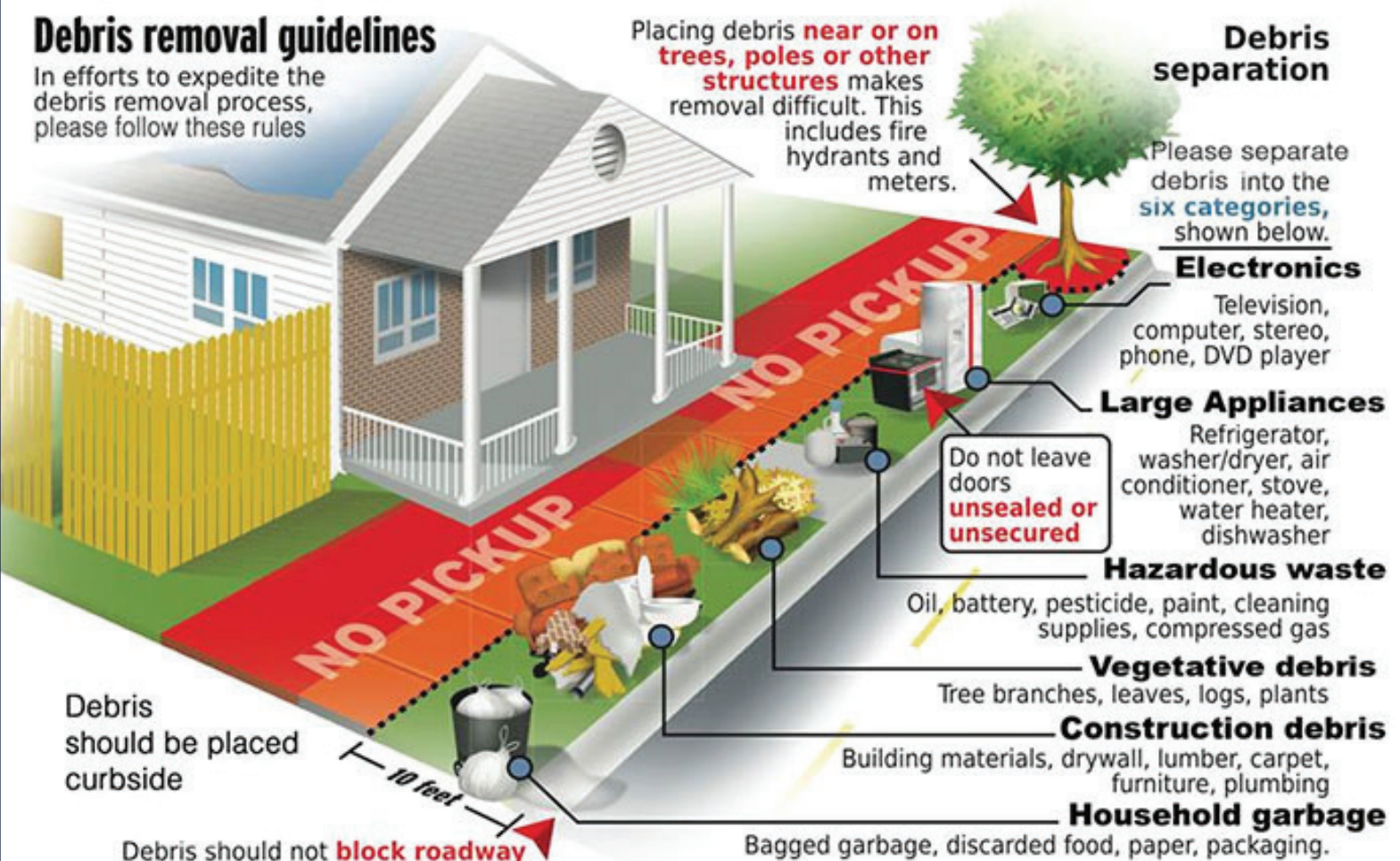
① BY PHONE - Call your County Emergency Management Agency
Phone numbers can be found on page 29

OR

② ONLINE - Use MEMA's 'Self Report' tool
Visit: msema.org/contact/crisistrack/ and select your county

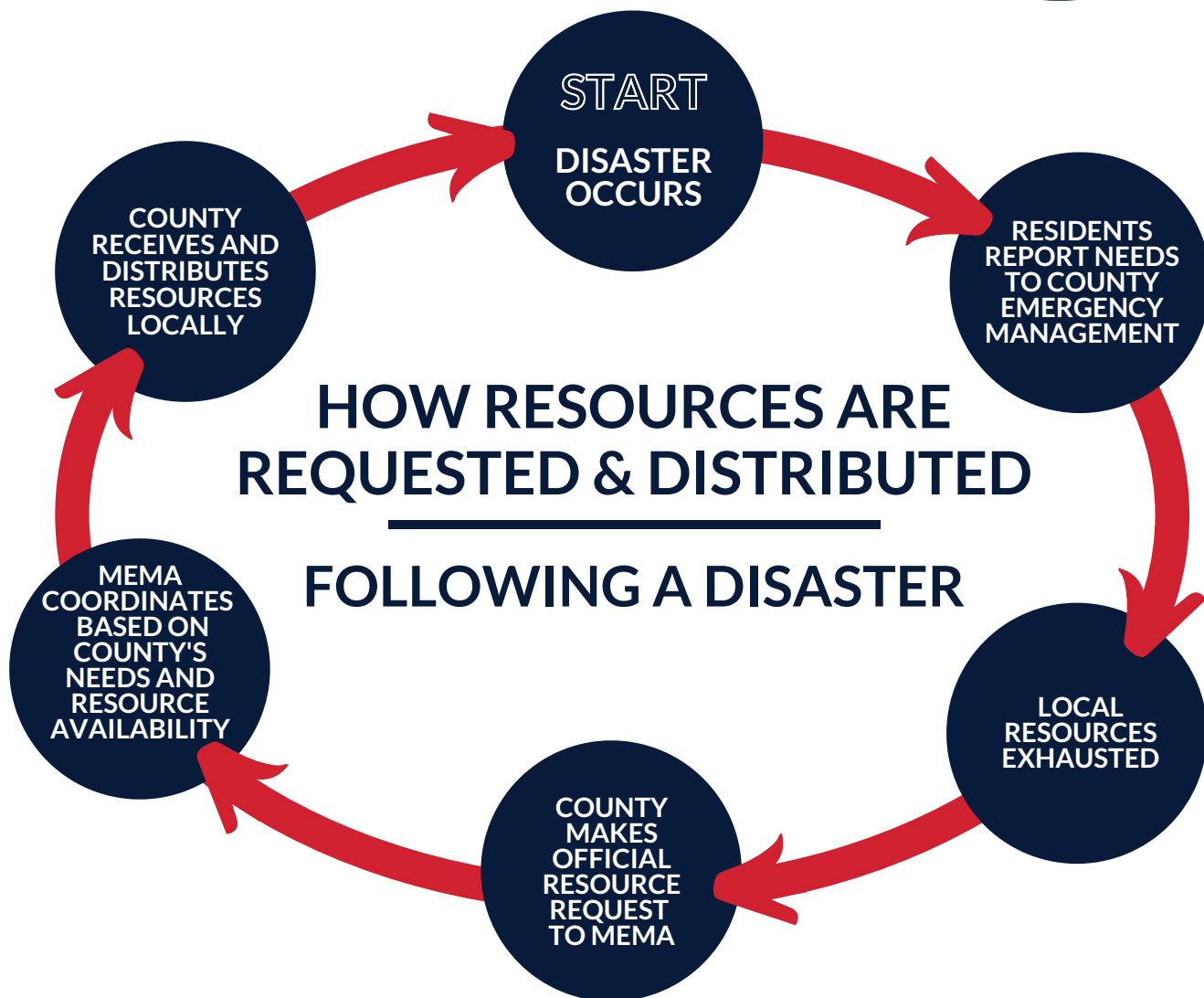
Debris removal guidelines

In efforts to expedite the debris removal process, please follow these rules



IF YOU ARE IN NEED OF RESOURCES, CALL YOUR COUNTY EMERGENCY MANAGEMENT AGENCY

A FULL CONTACT LIST CAN BE FOUND ON PAGE 29



MISSISSIPPI BUSINESS EMERGENCY OPERATIONS CENTER

The MSBEOC is an online platform for information sharing within the business community and MEMA to assist those in need of resources following a disaster.

ALL businesses that would like to help with disaster response efforts are encouraged to register at msbeoc.msema.org



BEWARE OF SCAMS FOLLOWING DISASTERS



COMMON POST-DISASTER FRAUD
PRACTICES AND SCAMS INCLUDE:

1

FAKE OFFERS OF STATE AID

MEMA does not send direct payments to homeowners following a disaster. Legitimate, available resources will be available on our website: www.msema.org

2

PHONY HOUSING INSPECTORS

Fake housing inspectors may claim to represent state or local government agencies. Ask to see the inspector's identification badge.

3

ILLEGITIMATE GOVERNMENT WORKERS

You may be contacted by scam artists posing as disaster workers who are seeking money for services. **State and local disaster workers DO NOT accept money.**

4

FRAUDULENT CHARITABLE SOLICITATIONS

Criminals often send fraudulent communications through email or social media designed to solicit contributions. A list of reputable charities that are approved by the Better Business Bureau's Wise Giving Alliance is available at www.give.org

5

FAKE TEXTS AND SOCIAL MEDIA POSTS

If any type of assistance becomes available following a disaster, MEMA will share the information on our website and official social media pages.

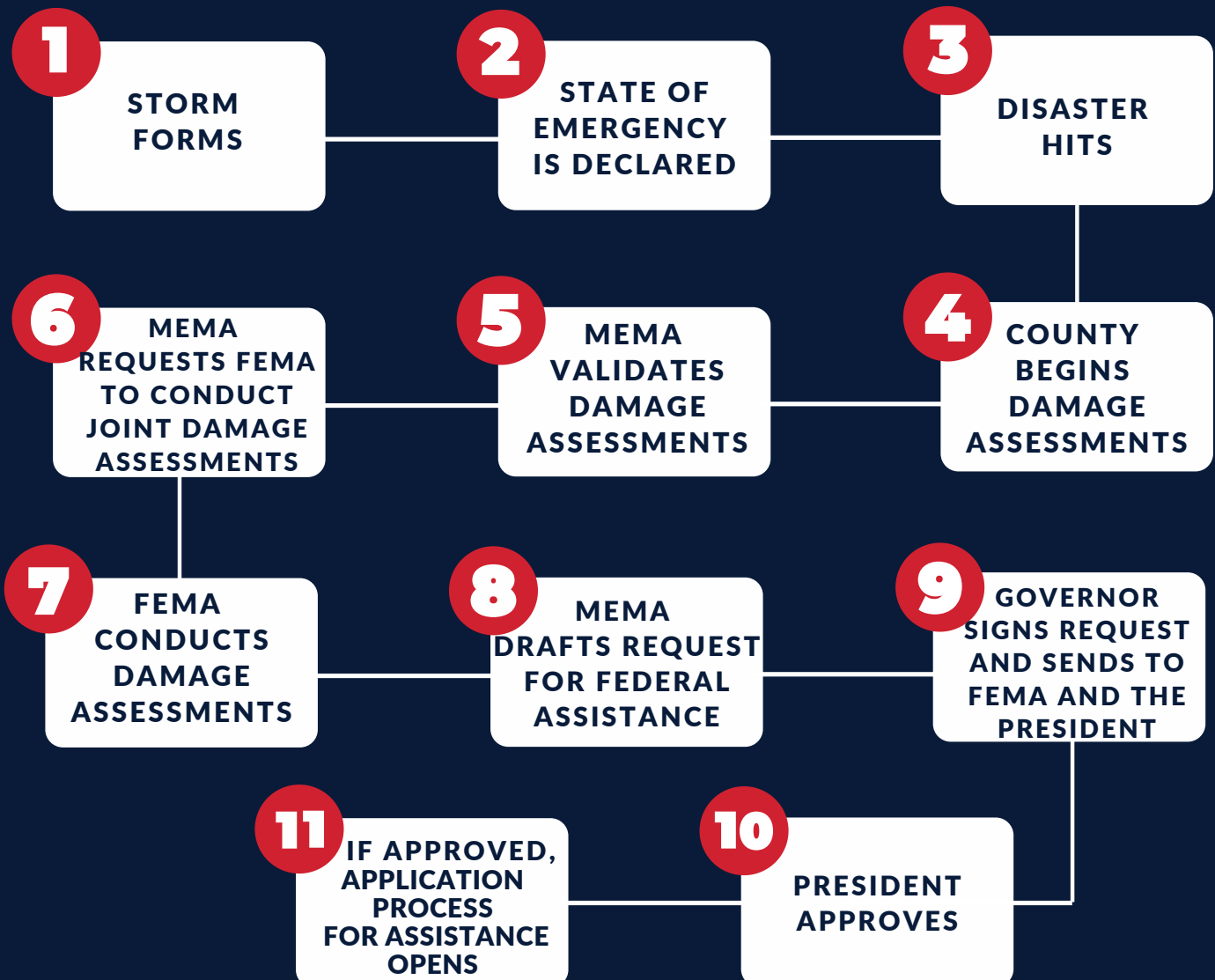
**IF YOU BELIEVE YOU ARE A VICTIM OF A SCAM OR
IDENTITY THEFT, REPORT IT TO YOUR LOCAL POLICE
OR CONTACT THE OFFICE OF THE MISSISSIPPI
ATTORNEY GENERAL AT 601-359-4230**

RECOVERY

FOLLOWING A DISASTER

Depending on the severity of a disaster and the extent of the damage, federal assistance could become available to homeowners, renters, business owners, local governments and/or certain private nonprofits. However, federal assistance is not guaranteed!

A STEP BY STEP EXPLANATION OF HOW THE STATE REQUESTS FEDERAL ASSISTANCE FOLLOWING A DISASTER



TYPES OF POSSIBLE FEDERAL ASSISTANCE FOLLOWING A DISASTER

1 FEMA INDIVIDUAL ASSISTANCE

WHO'S ELIGIBLE:

Individuals and families who sustained loss after a disaster for declared counties

HOW TO BECOME ELIGIBLE:

A Major Disaster Declaration for Individual Assistance must be declared by the President for your county following the disaster.

ASSISTANCE MAY INCLUDE:

- Grants to help pay for temporary housing
- Emergency home repairs
- Uninsured or underinsured personal property losses
- Medical expenses cause by the disaster
- Other serious disaster-related expenses

2 FEMA PUBLIC ASSISTANCE

WHO'S ELIGIBLE:

Local and state governments as well as certain nonprofits for declared counties

- FEMA can provide up to 75% reimbursement for eligible costs

HOW TO BECOME ELIGIBLE:

A Major Disaster Declaration for Public Assistance must be declared by the President for your county following the disaster.

ASSISTANCE MAY INCLUDE:

- Emergency protective measures
- Debris removal
- Infrastructure repairs or replacement needed due to disaster-related damage

TYPES OF POSSIBLE FEDERAL ASSISTANCE FOLLOWING A DISASTER

3

SBA HOME DISASTER LOANS

WHO'S ELIGIBLE:

Homeowners/renters who sustained damage & live in an SBA disaster-declared county.

HOW TO BECOME ELIGIBLE:

The Small Business Administration must approve a disaster declaration for your county following the disaster.

HOW CAN THE LOAN BE USED?

Can be used to repair or replace disaster-damaged real estate and/or personal property

LOAN AMOUNT LIMITS:

Up to \$200,000 for repair/replacement of real estate and up to \$40,000 for personal property

4

SBA PHYSICAL DISASTER LOANS

WHO'S ELIGIBLE:

Businesses and private nonprofits that sustained damage in an SBA disaster declared county.

HOW TO BECOME ELIGIBLE:

The Small Business Administration must approve a disaster declaration for your county following the disaster.

HOW CAN THE LOAN BE USED?

Can be used to repair or replace disaster-damaged property owned by the business including real estate and inventories

LOAN AMOUNT LIMITS:

Up to \$2 million for businesses and private nonprofits



CONTACTS

IMPORTANT CONTACT INFORMATION



MEMA

☎ 1-866-920-MEMA (6362)

🌐 WWW.MSEMA.ORG



NWS JACKSON, MS

☎ 601-936-2189

🌐 WWW.WEATHER.GOV/JAN



NWS MEMPHIS, TN

☎ 901-544-0399

🌐 WWW.WEATHER.GOV/JAN



NWS MOBILE, AL

☎ 251-633-6443

🌐 WWW.WEATHER.GOV/MOB



NWS NEW ORLEANS, LA

☎ 504-522-7330

🌐 WWW.WEATHER.GOV/LIX



MDOT

☎ 1-866-521-6368

🌐 WWW.MDOTTRAFFIC.COM



COUNTY EMERGENCY MANAGEMENT AGENCY CONTACT LIST

COUNTY	PHONE NUMBER	COUNTY	PHONE NUMBER
ADAMS	601-442-7021	CLAY	662-494-2088
ALCORN	662-286-7737	COAHOMA	662-624-3041
AMITE	601-657-1011	COPIAH	601-894 -1658
ATTALA	662-289-5322	COVINGTON	601-765-6687
BENTON	662-224-6338	DESOTO	662-469-8017
BOLIVAR	662-843-2300	FORREST	601-544-5911
CALHOUN	662-983-0257	FRANKLIN	601-384-1720
CARROLL	662-237-9268	GEORGE	601-947-7557
CHICKASAW	662-448-1012	GREENE	601-394-5627
CHOCTAW	662-285-9705	GRENADA	662-226-1076
CLAIBORNE	601-437-4684	HANCOCK	228-255-0942
CLARKE	601-776-2256	HARRISON	228-865-4002



COUNTY EMERGENCY MANAGEMENT AGENCY CONTACT LIST

COUNTY	PHONE NUMBER	COUNTY	PHONE NUMBER
HINDS	601-960-1476	LAMAR	601-794-5378
HOLMES	662-235-5126	LAUDERDALE	601-482-9852
HUMPHREYS	662-247-0457	LAWRENCE	601-587-7664
ISSAQUENA	662-907-1960	LEAKE	601-267-5757
ITAWAMBA	662-862-9616	LEE	662-432-2950
JACKSON	228-769-3111	LEFLORE	662-453-1428
JASPER	601-764-3800	LINCOLN	601-833-8561
JEFFERSON	601-786-8422	LOWNDES	662-329-5110
JEFFERSON DAVIS	601-792-5377	MADISON	601-859-4188
JONES	601-649-3535	MARION	601-736-9627
KEMPER	601-527-2393	MARSHALL	662-551-6146
LAFAYETTE	662-234-5667	MONROE	662-369-3683



COUNTY EMERGENCY MANAGEMENT AGENCY CONTACT LIST

COUNTY	PHONE NUMBER	COUNTY	PHONE NUMBER
MONTGOMERY	662-283-1121	QUITMAN	662-326-7909
MBCI	601-656-0620	RANKIN	601-825-1499
NESHOBA	601-656-3121	SCOTT	601-469-4100
NEWTON	601-635-4301	SHARKEY	662-873-4355
NOXUBEE	662-726-5111	SIMPSON	601-847-3434
OKTIBBEHA	662-338-1076	SMITH	601-782-9151
PANOLA	662-487-2430	STONE	601-928-3077
PEARL RIVER	601-795-3058	SUNFLOWER	662-887-6253
PERRY	601-964-8474	TALLAHATCHIE	662-647-2540
PIKE	601-684-3564	TATE	662-562-5012
PONTOTOC	662-509-8585	TIPPAH	662-837-4432
PRENTISS	662-728-8198	TISHOMINGO	662-423-7028



COUNTY EMERGENCY MANAGEMENT AGENCY CONTACT LIST

COUNTY	PHONE NUMBER
TUNICA	662-363-4012
UNION	662-534-1992
WALTHALL	601-827-5116
WARREN	601-636-1544
WASHINGTON	662-335-1945
WAYNE	601-735-2184
WEBSTER	662-552-7007
WILKINSON	601-645-2828
WINSTON	662-773-3651
YALOBUSHA	662-675-2556
YAZOO	662-746-1569

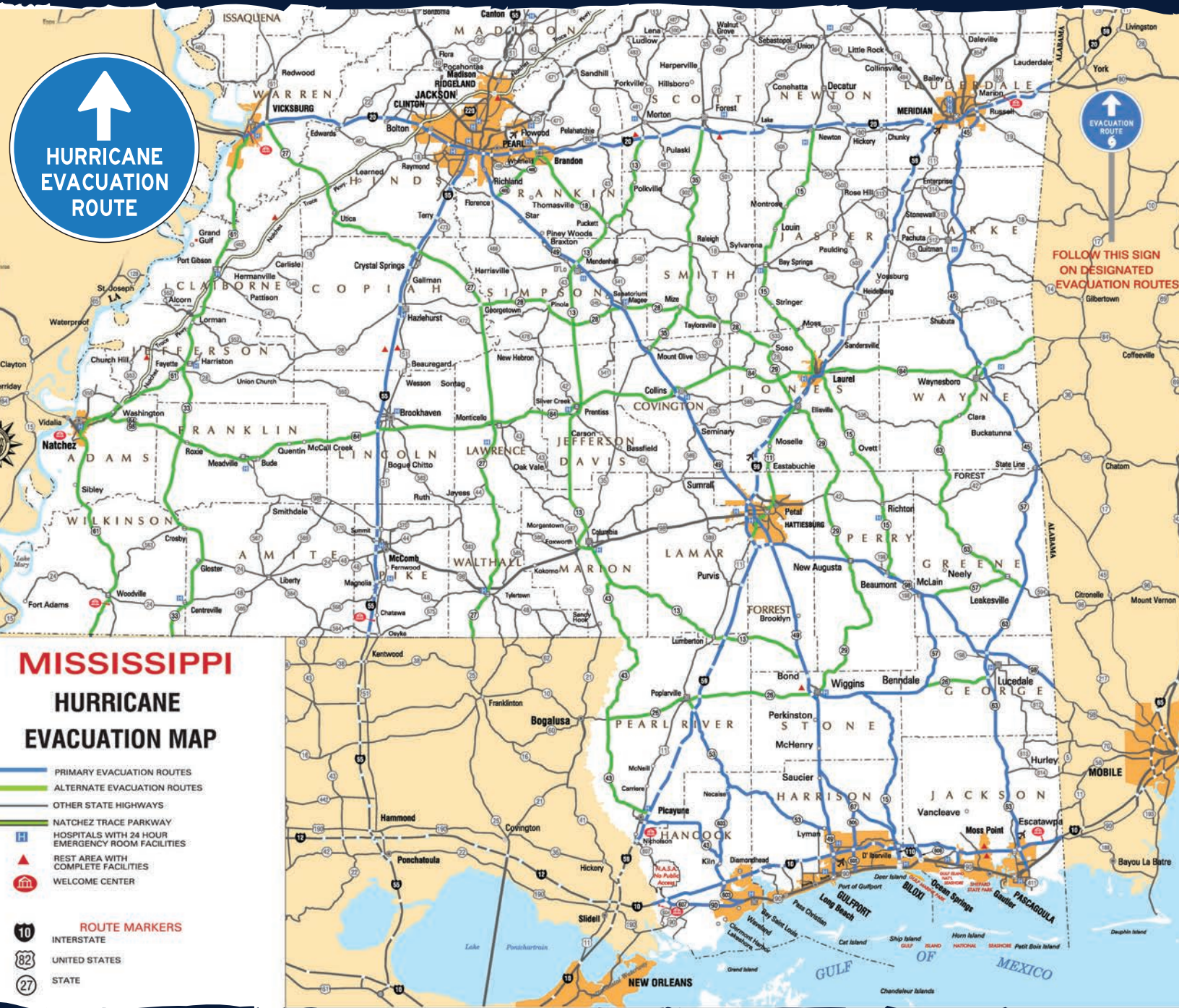
DISASTER SUPPLY KIT CHECKLIST

- 3 gallons of water per person
- Peanut butter
- Dried or canned meats
- Crackers
- granola bars/dry cereal
- Canned food
- Flashlight & batteries
- Pet food
- First aid kit
- Hygiene Items

ADDITIONAL DISASTER SUPPLY KIT ITEMS

- weather radio
- extra cash
- Copies of medical, home & car insurance documents
- Birth certificates
- Social security card
- marriage license
- Passport
- waterproof bag for important documents
- Can opener

MISSISSIPPI'S HURRICANE EVACUATION MAP



DOWNLOAD the FREE MDOT Traffic Mobile App from the App Store or Google Play